

1292S Synchro Transmitter

Product Description

- The INCON model 1292S is a size 15 synchro (Selsyn®) transmitter that is used to provide an electrical signal corresponding to rotary position. Synchro transmitters are inherently absolute position sensors, which means that the model 1292S indicates rotary position from a known reference without the need to re-zero each time power is applied. Therefore the absolute position of the shaft is not lost if power is removed from the unit. The model 1292S generates three output signals. The difference in the amplitudes of these signals indicates the angular position of the shaft.
- The synchro is wired directly to a printed circuit board, which has six external wiring terminals to simplify installation. In addition, the circuit board also contains surge suppression devices to protect the unit from transient voltage spikes.
- The 1292S is provided without a universal mounting bracket, for installations where this synchro transmitter is designed-in to your system. All mounting hardware is provided for the synchro and the circuit board, to facilitate mounting into your bracketing.



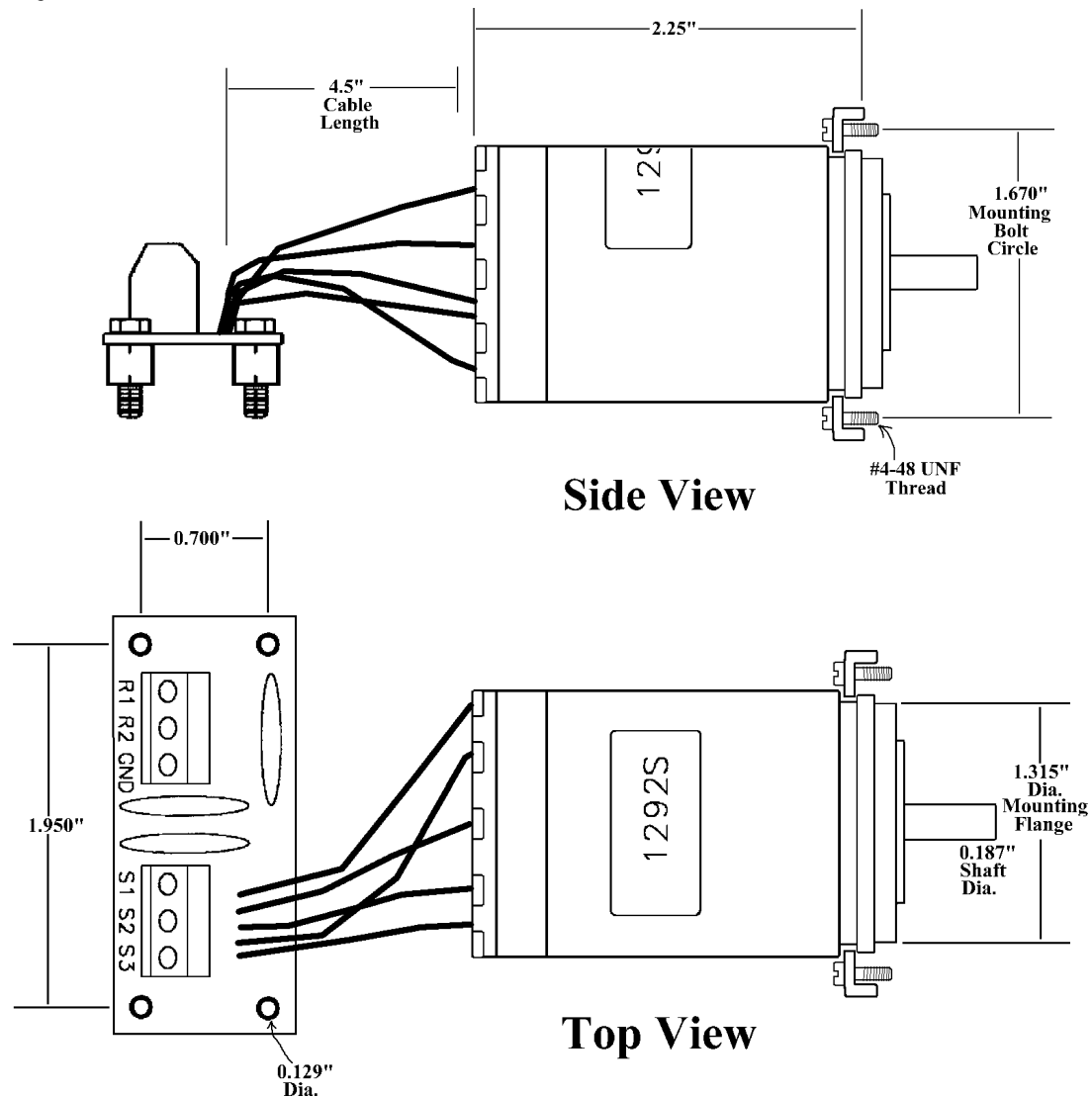
Applications

- Synchro transmitters are used in applications where reliable, rugged design, and accurate absolute position data are requirements. Such applications include monitors and indicators for: transformer load tap changers, hydro gates, valves, machine tool position readouts, cable hoists, and conveyors.
- Its small size allows the 1292S to be mounted in a minimum of space (outline dimensions are given on page 2). The 1292S is designed to be used with solid-state synchro receivers (such as the INCON model 1250 and 1255 series) that draw little power from the synchro outputs.

"Selsyn" is a registered trademark of General Electric.

Product Features

- Very fine resolution: extremely accurate and reliable.
- Does not require re-zeroing or periodic recalibration.
- Excellent noise immunity.
- Protection from transient voltage spikes.
- Stable over time and temperature.
- Convenient wiring termination.
- Virtually unlimited life.

**Ordering Information:**

MODEL 1292S With Surge Suppression Circuit Board