

**HYPERTERMINAL SETTINGS
FOR THE FILES "OPTIMIZE.HT" AND "CCSM.HT"**

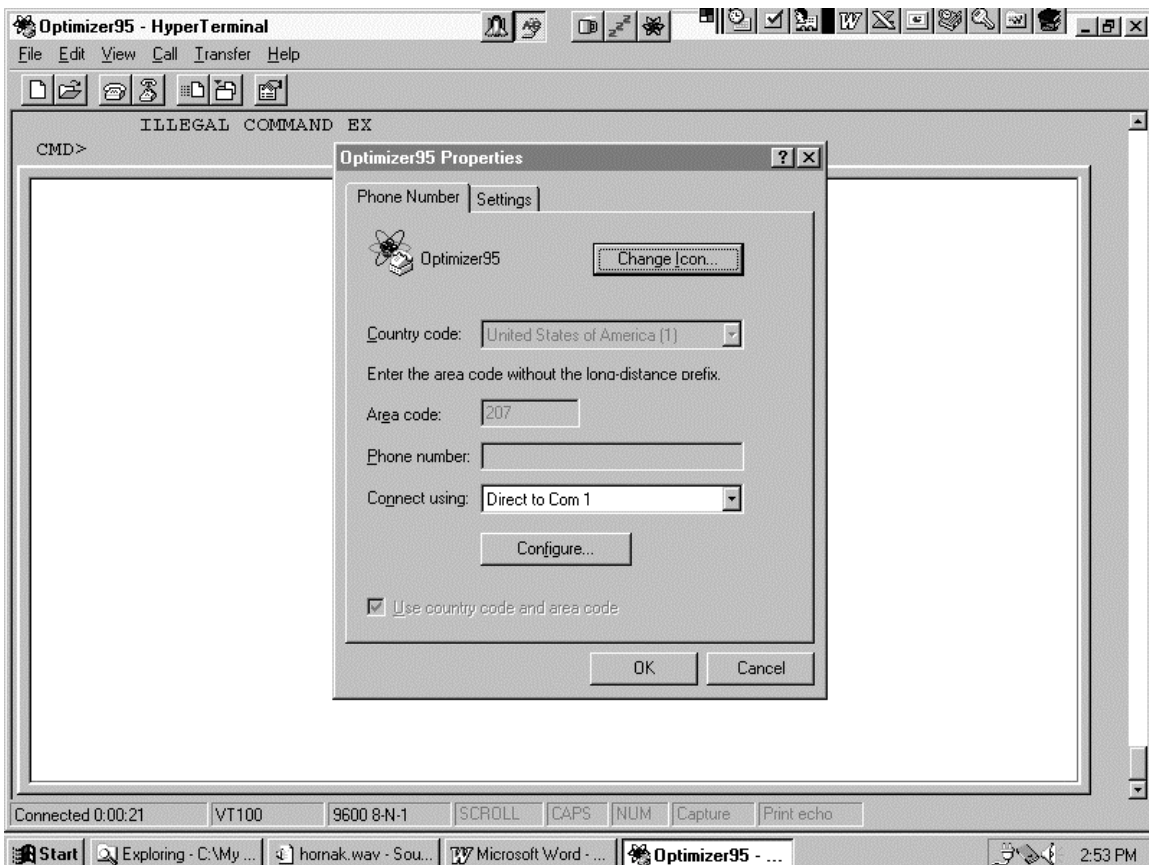
INTRODUCTION

This document depicts the terminal communication settings employed in HyperTerminal for communication with an Optimizer and CCSM. HyperTerminal is an accessory program in Windows[®]95/98/ME/2000. The files Optimize.ht and CCSM.ht employ these settings.

SETTINGS

This screen print and associated settings are found by clicking – *File>Properties> Phone Number*.

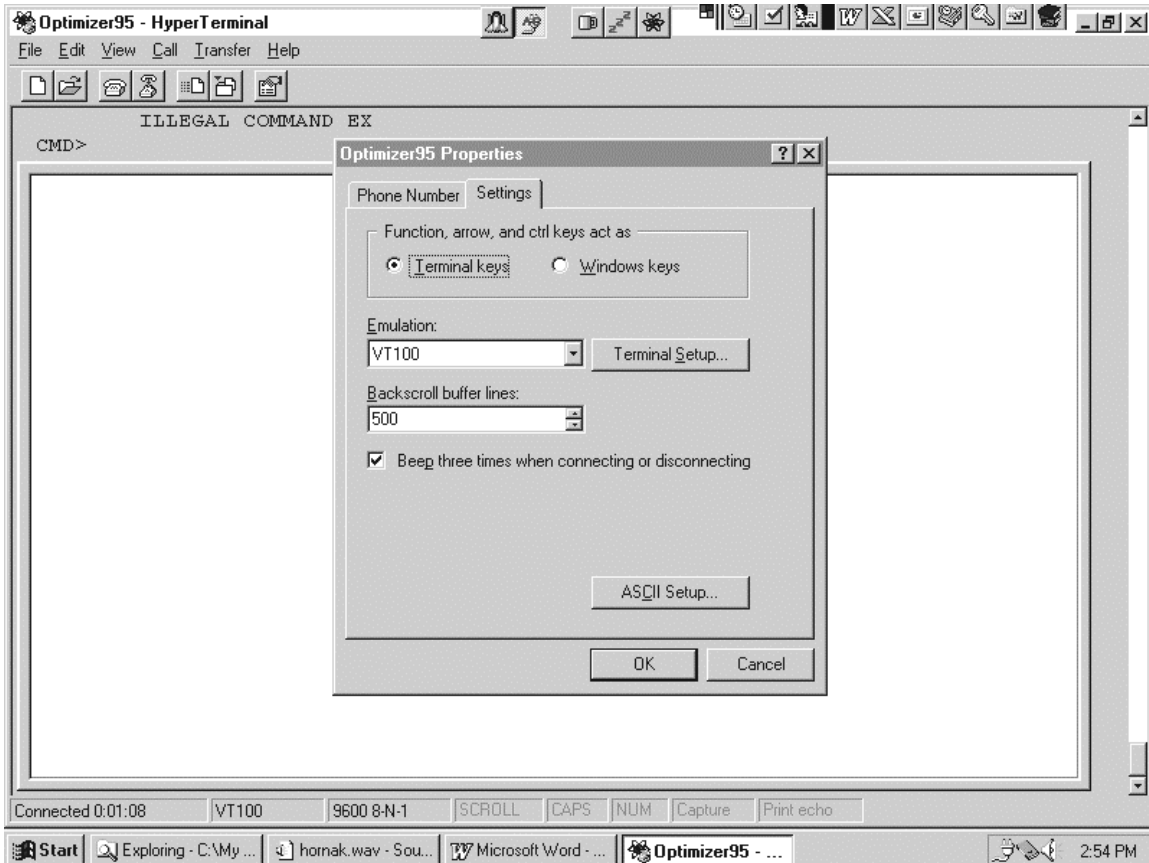
These settings presume that COM1 is being used for direct connection between a PC and the Optimizer.



HYPERTERMINAL SETTINGS FOR THE FILES "OPTIMIZE.HT" AND "CCSM.HT"

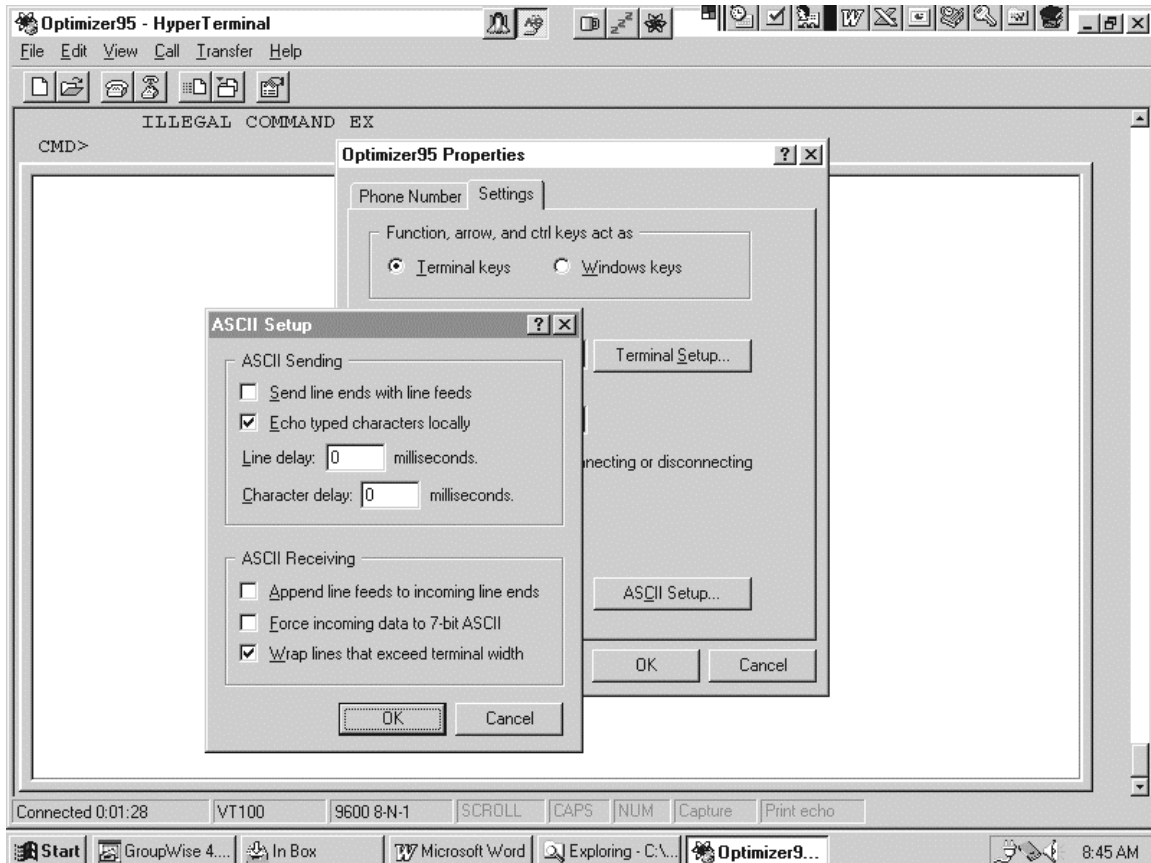
This screen print and associated settings are found by clicking – *File>Properties> Settings.*

These settings presume that COM1 is being used for direct connection between a PC and the Optimizer.



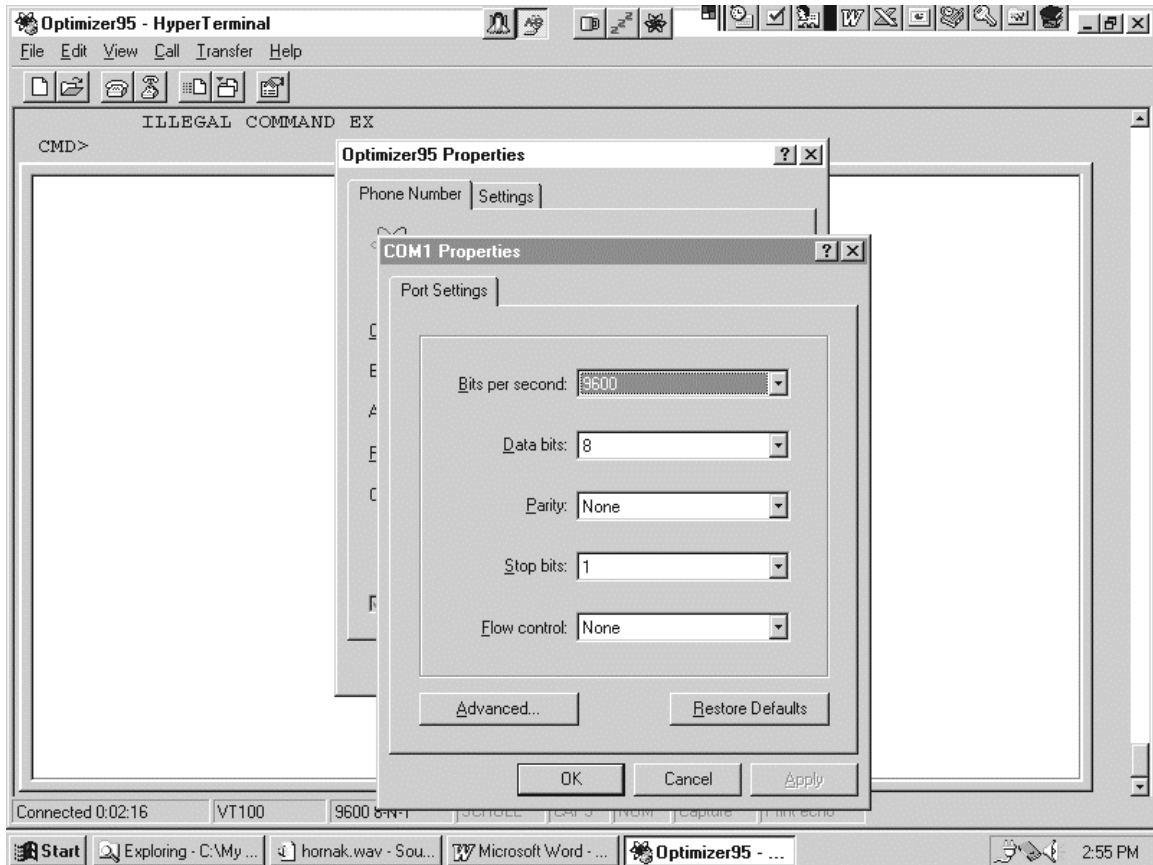
HYPERTERMINAL SETTINGS FOR THE FILES "OPTIMIZE.HT" AND "CCSM.HT"

This screen print and associated settings are found by clicking –
File>Properties> Settings>ASCII.....



HYPERTERMINAL SETTINGS FOR THE FILES "OPTIMIZE.HT" AND "CCSM.HT"

This screen print and associated settings are found by clicking -
File>Properties>Phone Number>Configure.



HYPERTERMINAL SETTINGS FOR THE FILES "OPTIMIZE.HT" AND "CCSM.HT"

This screen print and associated settings are found by clicking –
File>Properties> Phone Number>Configure>Advanced.

